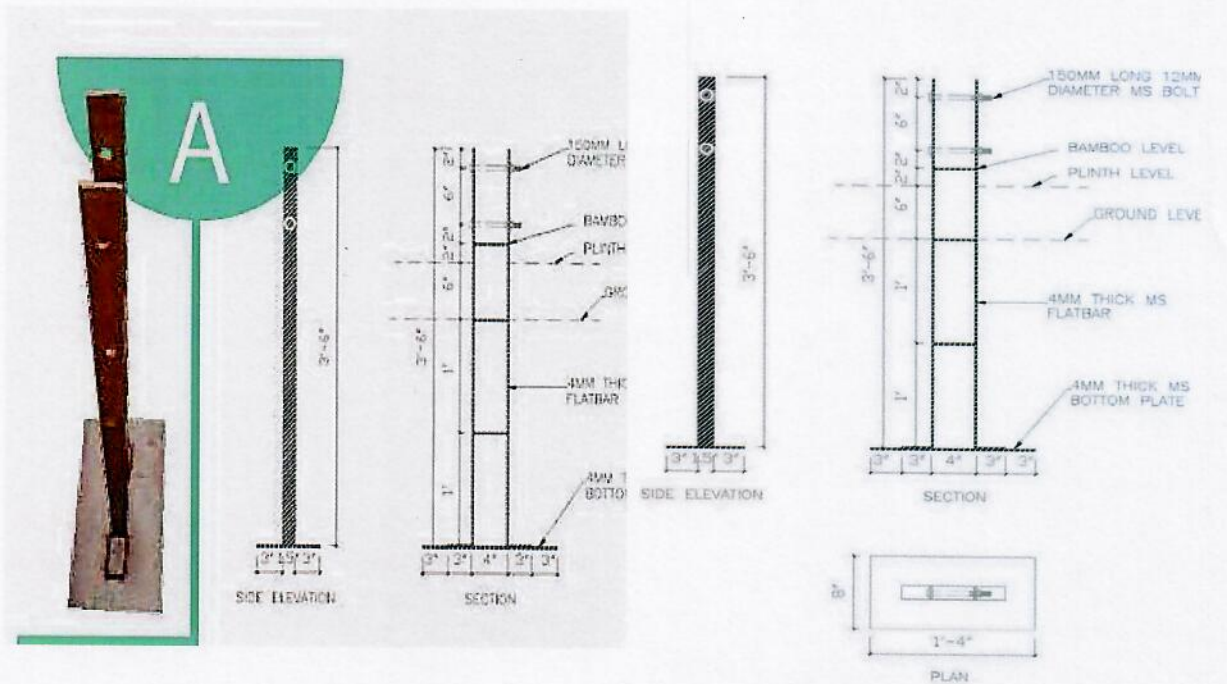


Transitional Shelter Assistance (TSA) Materials, essential materials

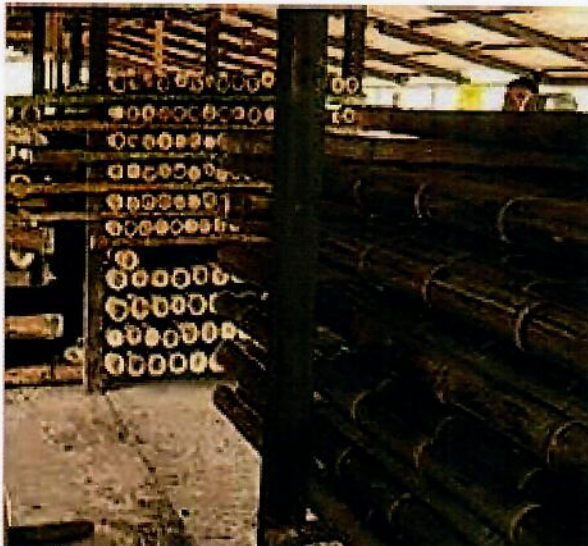


Steel Footing, *Type A* (as per footings catalogue)

Width: 38mm, tkn: 4mm, Holes: 14mm dia,

Base Plate: 400x200x4mm.

Including bolts, washers and nuts.



Bamboo, treated

20' long, 3" diameter (min.)

bottom part of mature big bamboo,
cut in the dry season



Rope, polypropylene (or equal), 6mm

woven with 2 or 3 strands, with the possibility
of being unravelled.